

Installation Instructions of SHARP CUPS driver for Red Hat Linux 9

This is describe how to install the SHARP CUPS drivers on a system running Red Hat Linux 9. The screenshots have been taken on Red Hat Linux 9. They may differ slightly from the appearance in other versions of Linux. Note: You should be login as "root" or be use "sudo" to install the software. (sudo allows a permited user to execute a command as the superuser or another user.)

0. Preparation

CUPS driver's archive is put on a suitable directory. For example, CUPS driver for AR-550(**sharp-1.4-ar550to700-ps.tar.gz**) put on **"/root/work"**.



1. Installing the Software

Uncompress the archive.

```
# tar xzvf sharp-1.4-ar550to700-ps.tar.gz
```

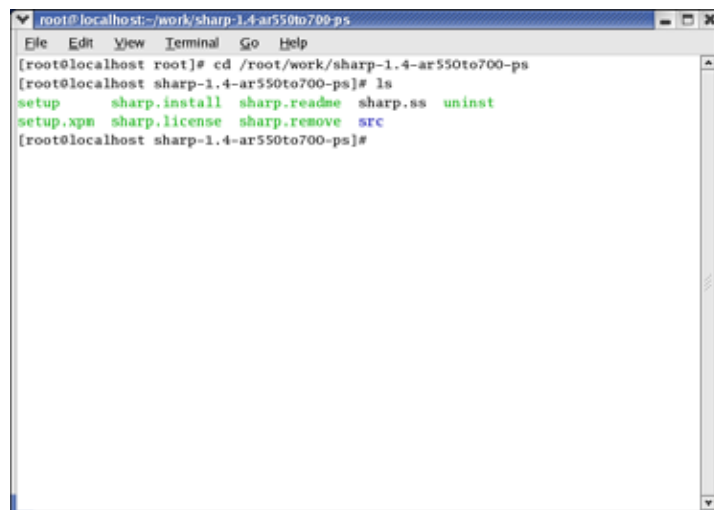
As for the decompression on terminal, the following messages are displayed.

```
./sharp-1.4-ar550to700-ps/  
./sharp-1.4-ar550to700-ps/setup  
./sharp-1.4-ar550to700-ps/setup.xpm  
./sharp-1.4-ar550to700-ps/sharp.rempve  
./sharp-1.4-ar550to700-ps/sharp.license  
./sharp-1.4-ar550to700-ps/sharp.readme  
./sharp-1.4-ar550to700-ps/sharp.ss  
./sharp-1.4-ar550to700-ps/uninst  
./sharp-1.4-ar550to700-ps/sharp.install  
./sharp-1.4-ar550to700-ps/src/  
./sharp-1.4-ar550to700-ps/src/ppd.tar
```

The content of the directory the decompression ahead is shown.



Open "New Terminal" and change directory to `"/root/work/sharp-1.4-ar550to700-ps"`.



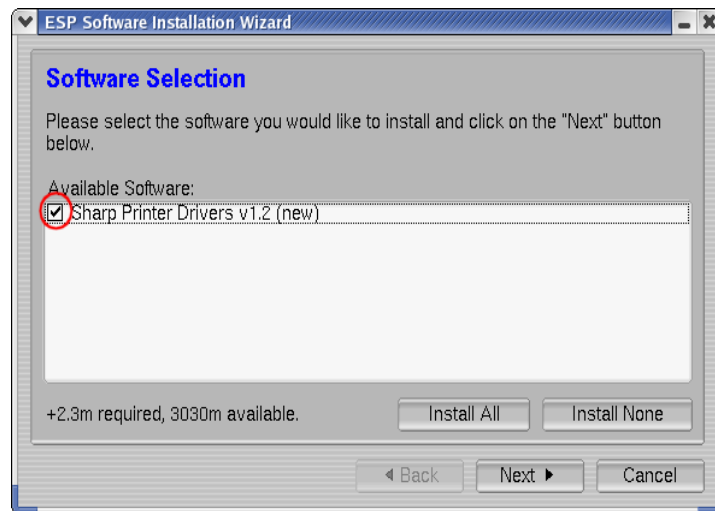
Type command in the terminal window.

./setup

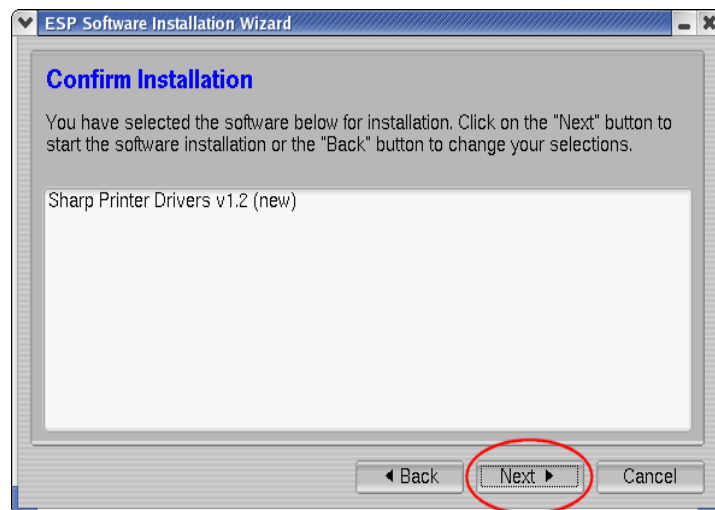
(Open the InstallationWizard and start the software installer.)



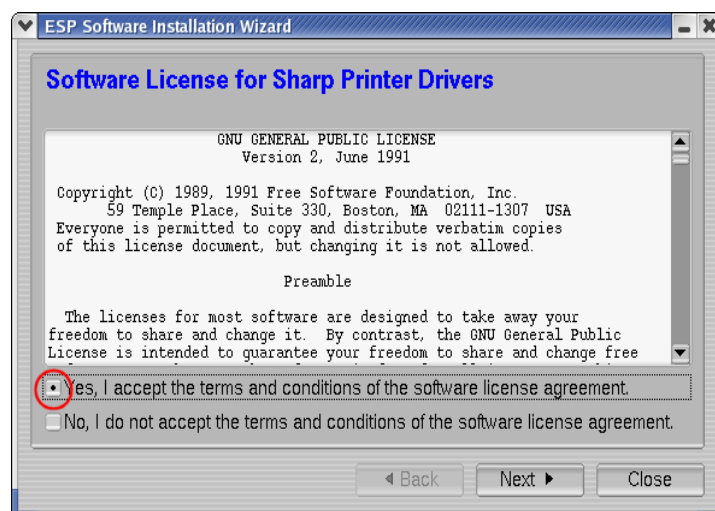
Click on the "Next" button.



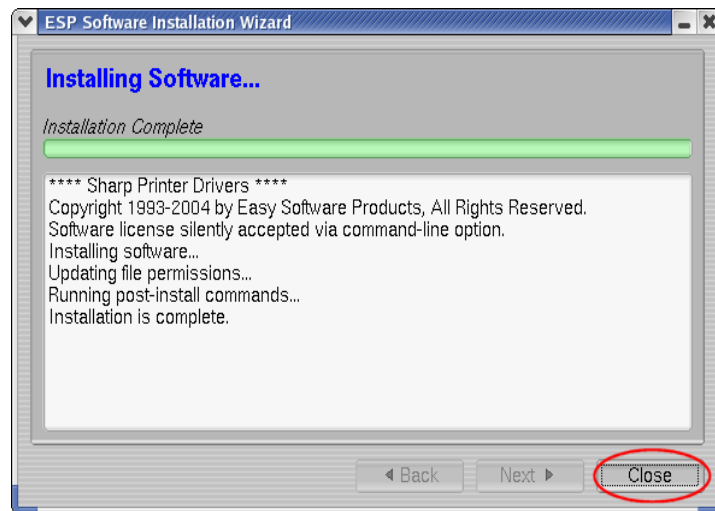
Click in the box next to **"Sharp Printer Drivers v1.2(new)"** and then click on the **Next** button.



Click on the **Next** button to perform the installation.



Click on **"Yes, I accept the terms and conditions of the software license agreement."** and then click on the **Next** button.

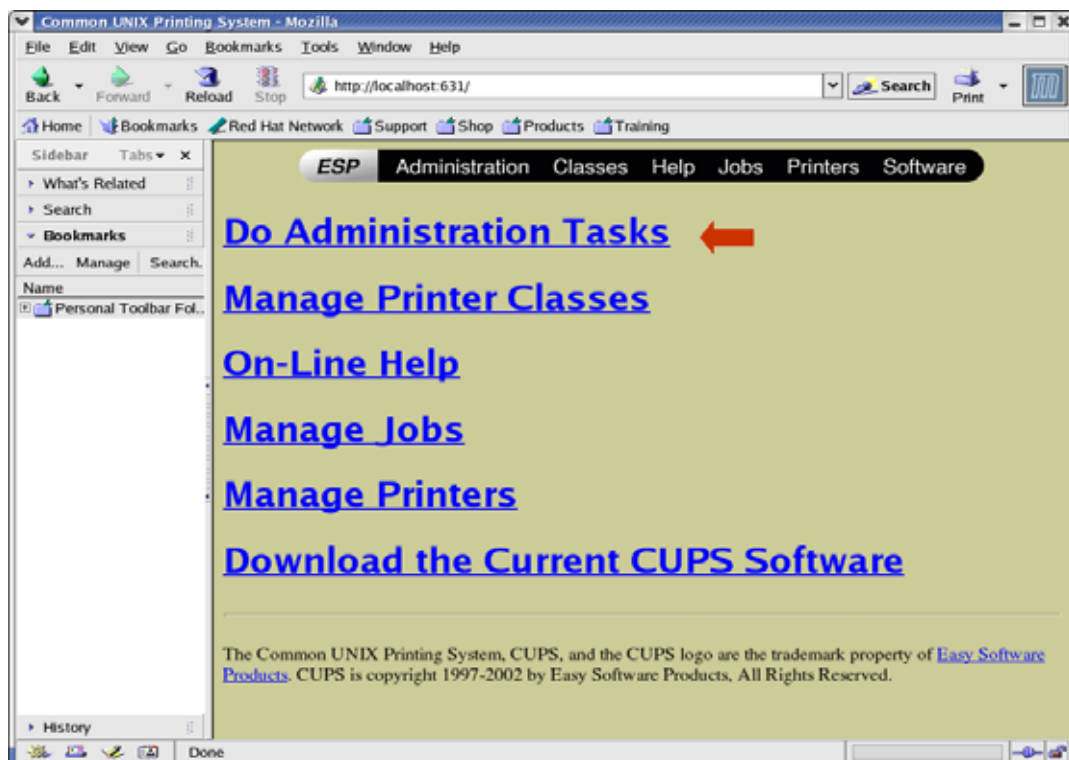


When the installation is completed, click on the **Close button** in the installer window. To be continue adding a Printer using Web browser.


2. Adding a Printer

Repeat the following steps for each printer you have.

Run your Web browser and open URL "**http://localhost:631**".



Click on the **Do Administration Tasks** link.



Prompt

Enter username and password for "CUPS" at localhost:631

User Name:

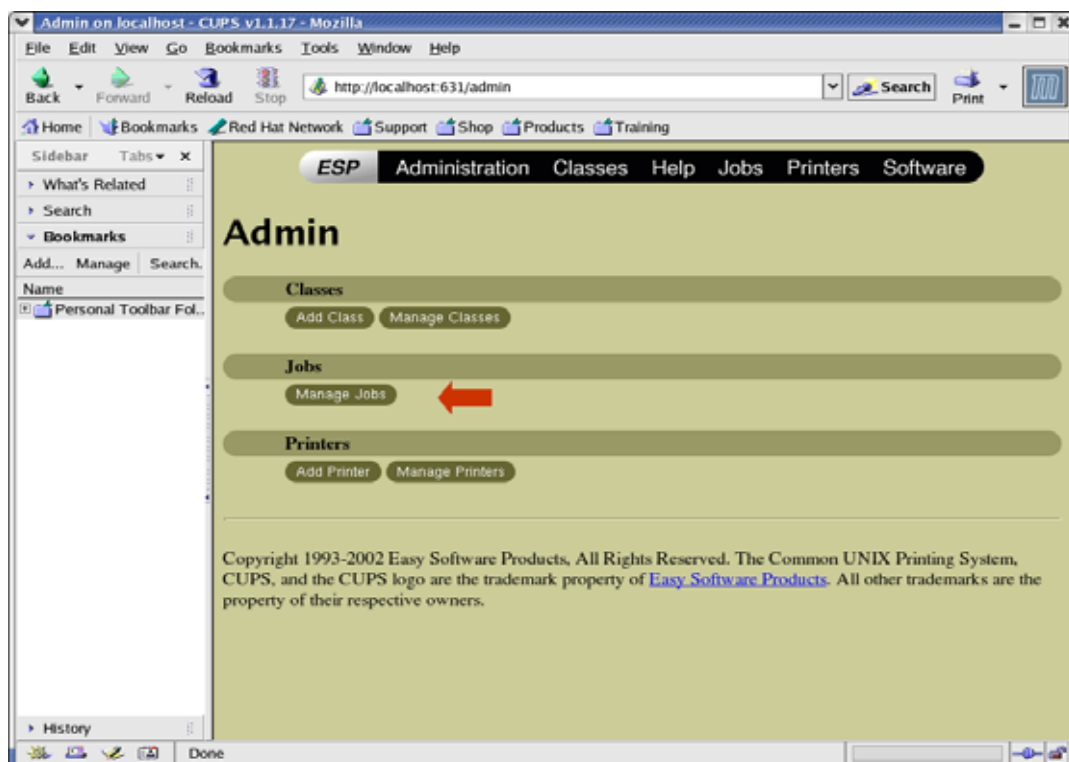
root

Password:

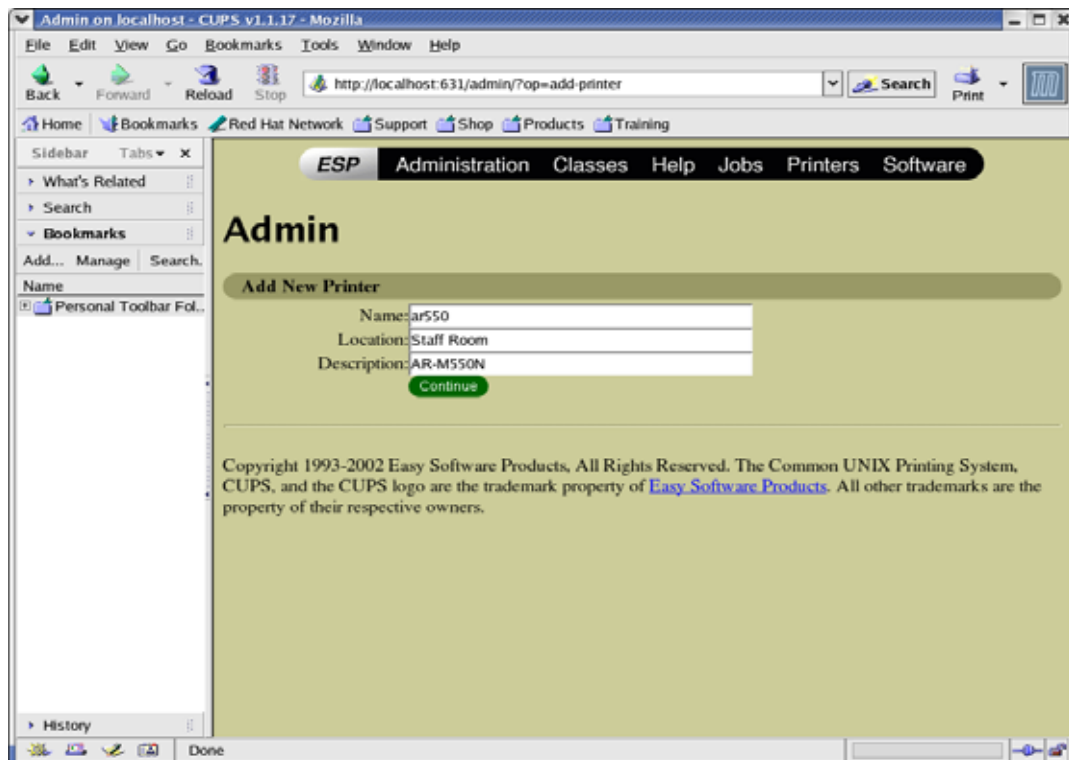
☐ Use Password Manager to remember these values.

OK Cancel

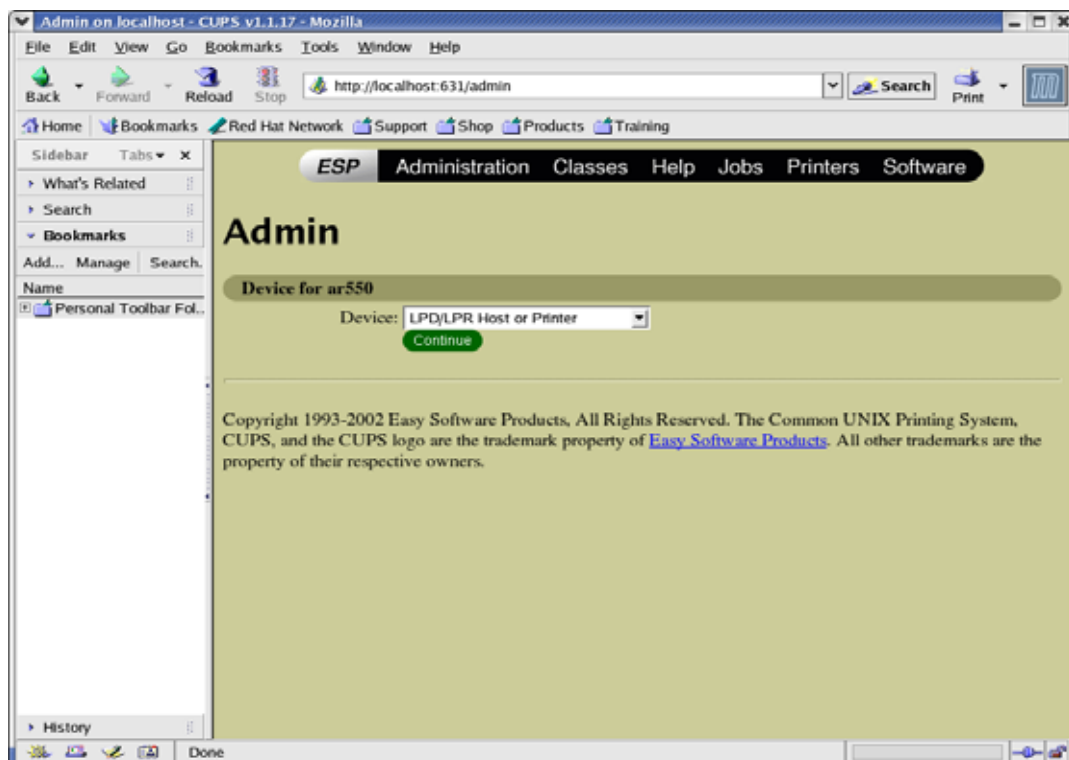
Enter the **"root"** username and **password** when prompted.



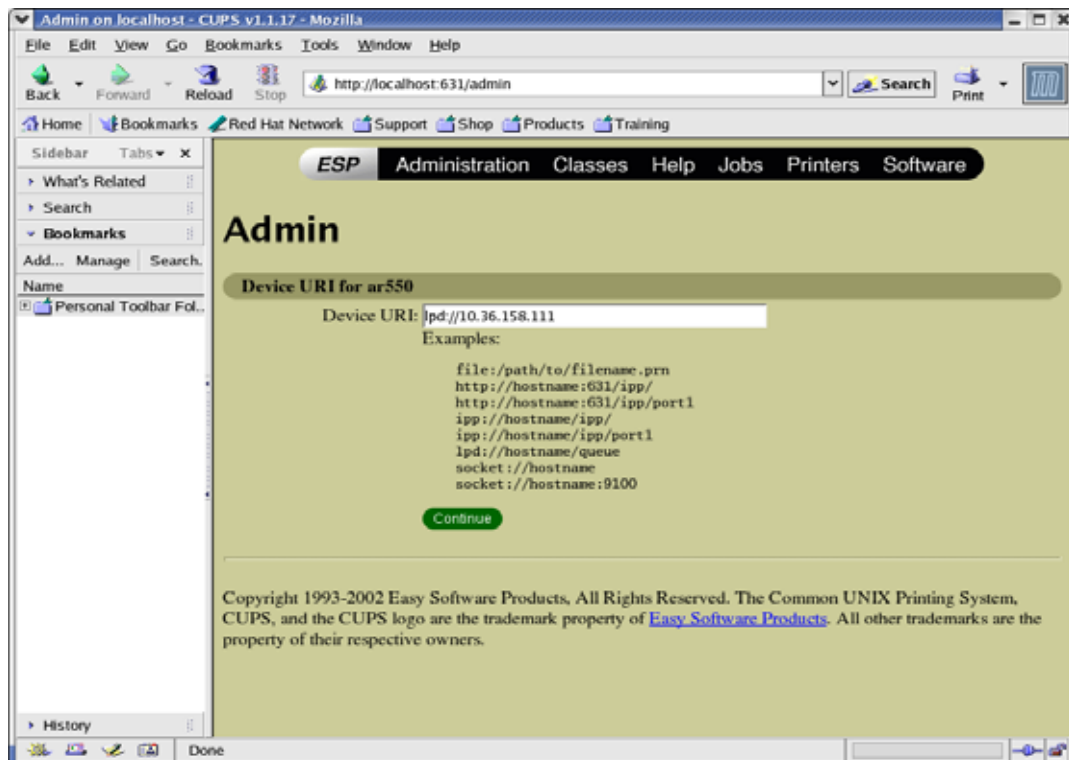
Click on the **"Add Printer"** button.



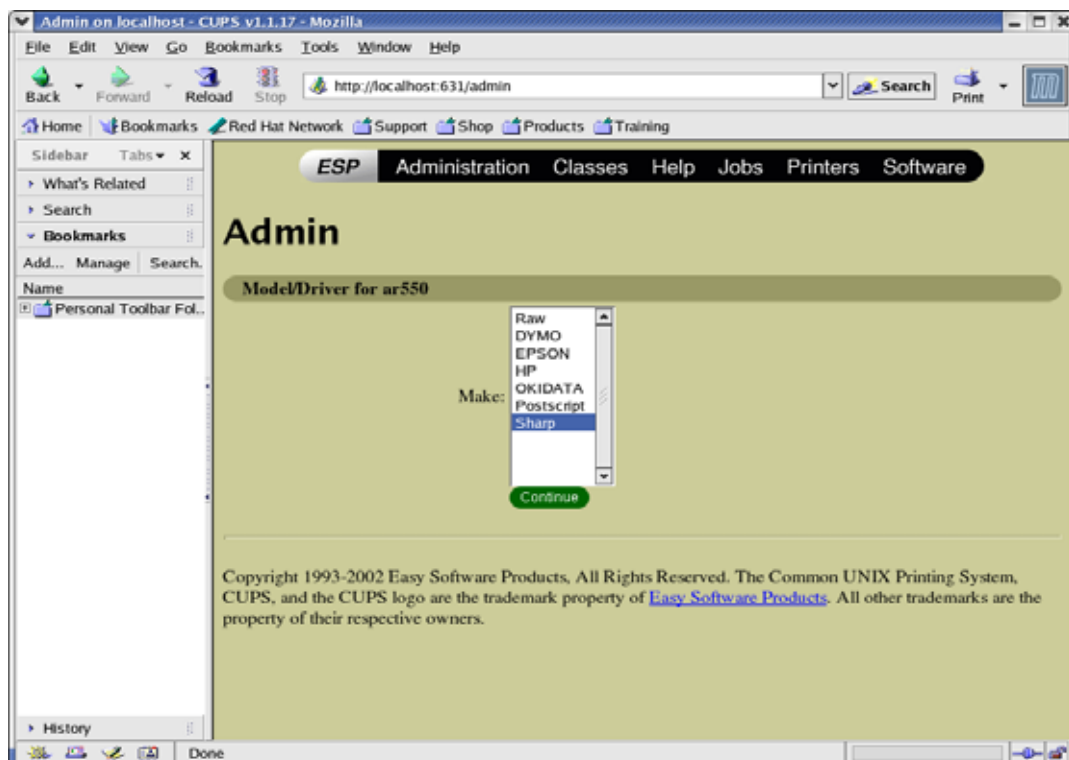
Enter the name, location and description of your printer. The name field can be up to **127 letters, numbers, dash(-), and underscores(_)**. The location field is a text description of where the printer can be found. The description field of the printer itself, usually the make and model. Click on **Continue** when all three field are filled in. (Filling in the field of location and description is arbitrary.)



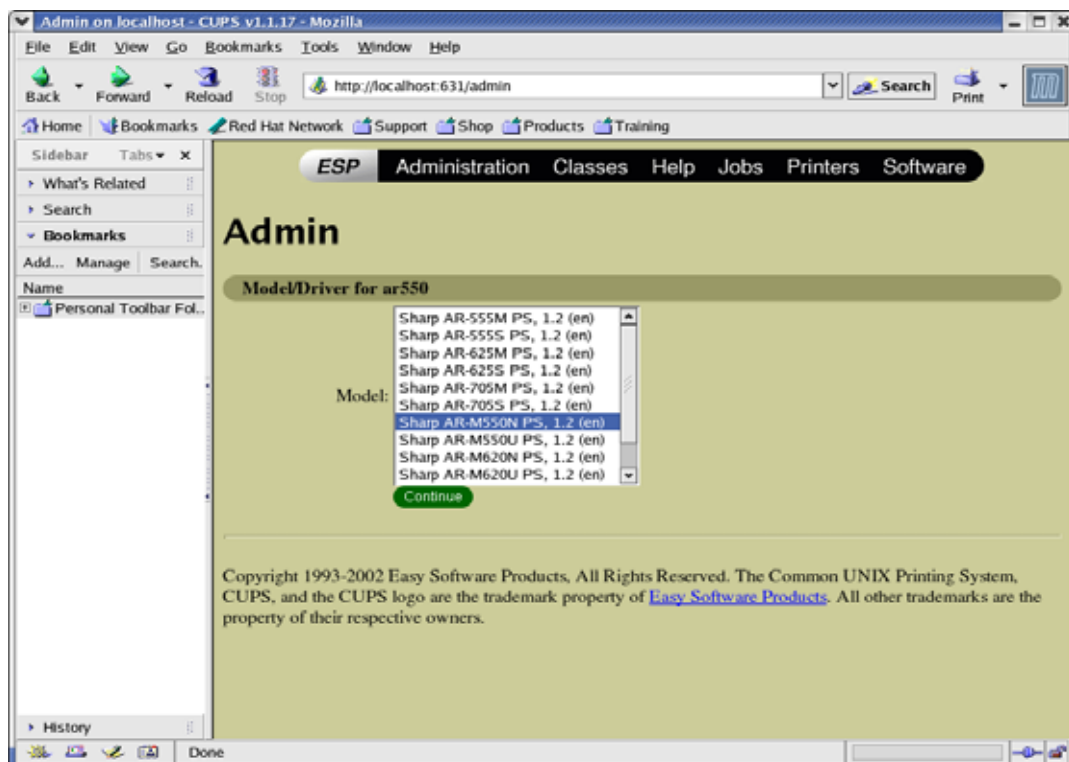
Choose the device to use, for example **"LPD/LPR Host or Printer"** networking printing device is the one to use. Click on **"Continue"** when the device chooser is set properly.



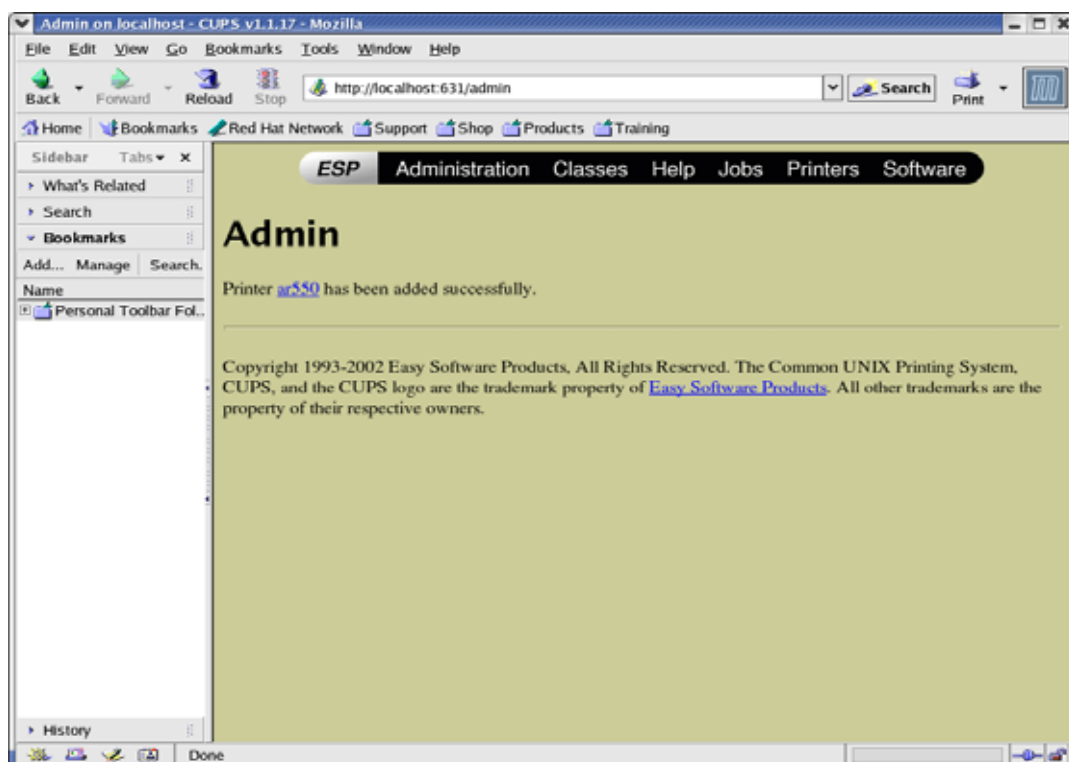
Enter the URL containing the **IP address or hostname of your printer** and click on "**Continue**".



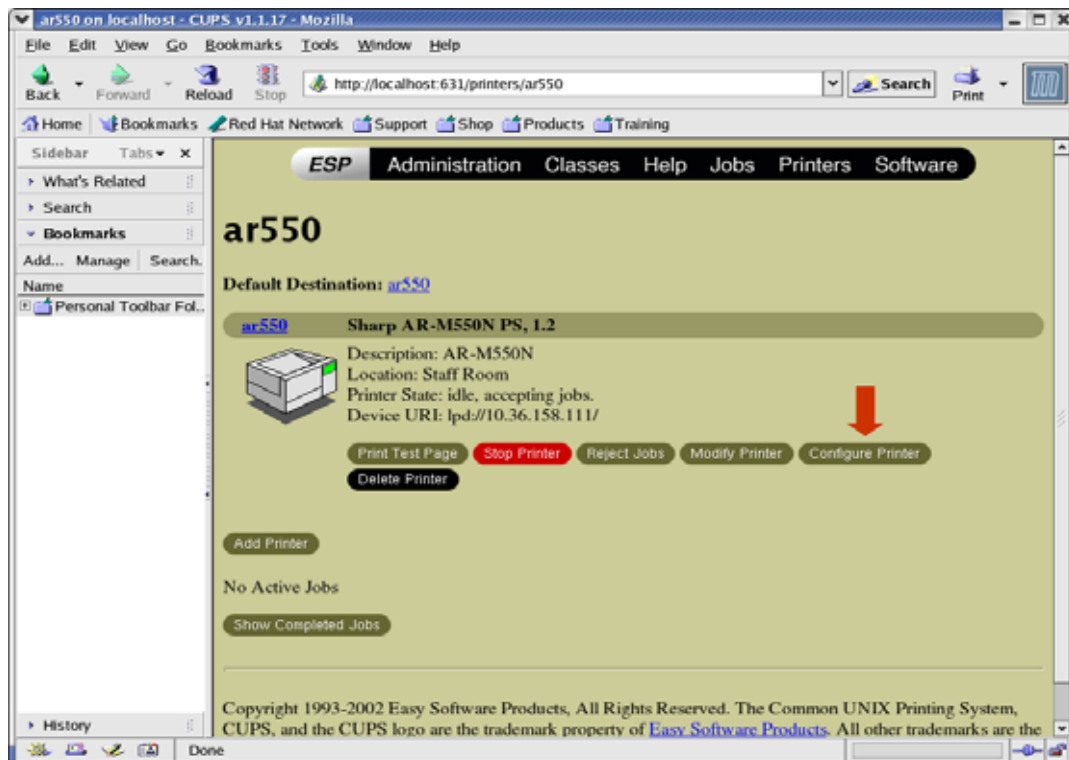
Choose "**Sharp**" from the Make list and click on "**Continue**".



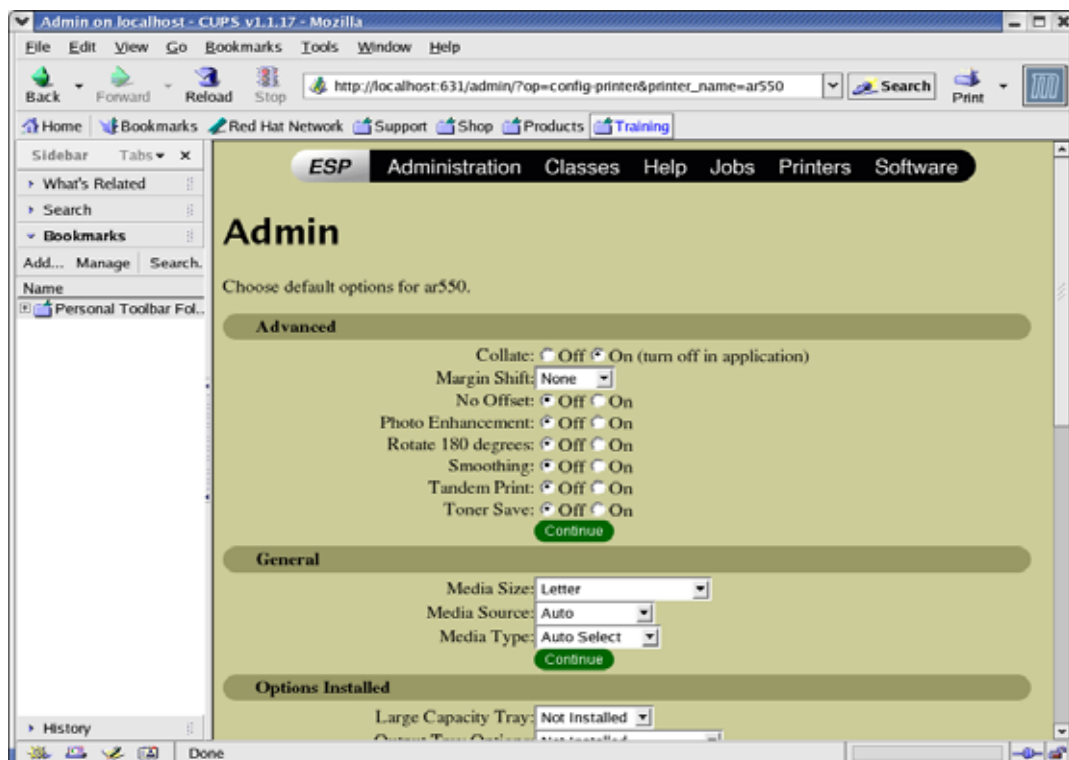
Select the model name that corresponds to your printer, click on "**Continue**".



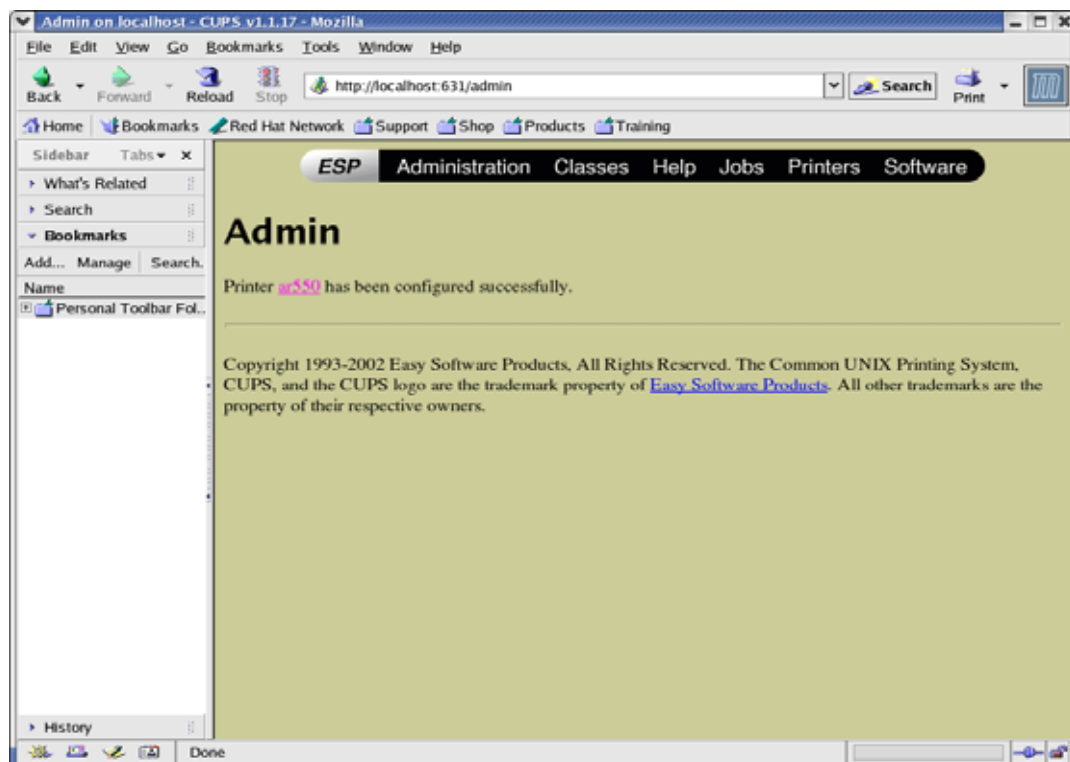
Click on **the printer link** to show the queue status.



Click on the **"Configure Printer"** button to configure the default and installed options.



Choose the default and installed options for your printer and click on **"Continue"**.



Click on **the printer link** to show the queue status.